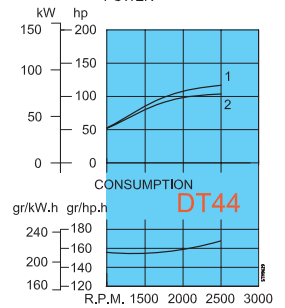
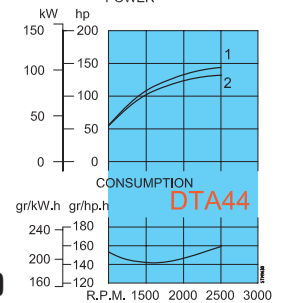


DT 44 - 4 CYLINDER, 84 KW (114 HP)
DTA 44 - 4 CYLINDER, 103 KW (140 HP)

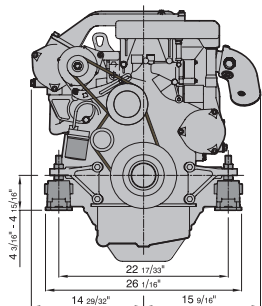
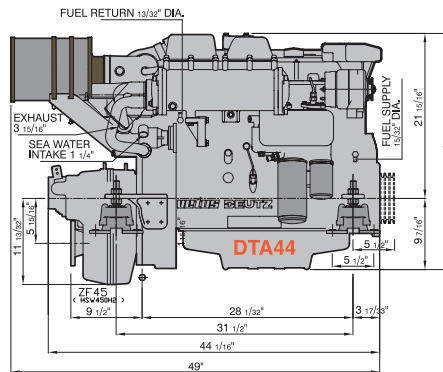
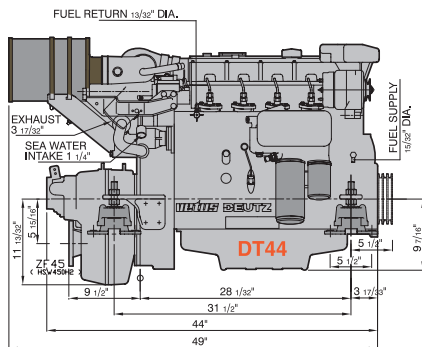
ISO 3046-1 FUEL STOP POWER RATING
 1 SPECIAL LIGHT DUTY
 2 LIGHT DUTY
 POWER



ISO 3046-1 FUEL STOP POWER RATING
 1 SPECIAL LIGHT DUTY
 2 LIGHT DUTY
 POWER



Certified within 5%



Technical data

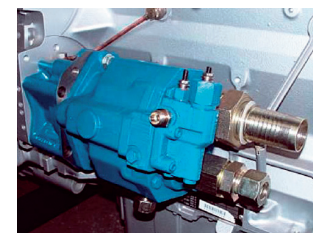
DT44
 Turbo-charged
 Deutz BF4M1012
 Bore : 101 mm
 Stroke : 126 mm
 Capacity : 4038 cm³ / 246 cu.inch
 Number of cylinders : 4
 Compression ratio : 18.4:1
 Firing order : 1-3-4-2
 Alternator : 12 Volt - 115 A
 Max. output at flywheel (ISO 3046-1)* : 84 kW (114 hp)
 Max. output at propeller shaft (ISO 3046-1)* : 80.1 kW (109.5 hp)
 Maximum rpm : 2500
 Torque at maximum rpm : 320 Nm
 Fuel consumption : 208 g/kW.h(152g/hp.h)
 Gearbox, standard : ZF45
 Ratio : 2.2/2.5/3:1
 Optional : ZF45A
 1,51/2,03/2,44:1
 Newage PRM 500
 1,46/1,94/2,57/2,9:1
 Dry weight (incl. standard gearbox) : 513 kg / 1129 lbs
 Max. installation angle (backwards) : 15°
 Max. lateral inclination angle (continuously) : 30°
 Calorifier connection : standard
 Cooling system, standard : heat exchanger cooling (dual circuit)
 Optional : keel-cooling

DTA44
 Turbo-charged/after cooled
 Deutz BF4M1012C
 Bore : 101 mm
 Stroke : 126 mm
 Capacity : 4038 cm³ / 246 cu.inch
 Number of cylinders : 4
 Compression ratio : 18.4:1
 Firing order : 1-3-4-2
 Alternator : 12 Volt - 115 A
 Max. output at flywheel (ISO 3046-1)* : 103 kW (140 hp)*
 Max. output at propeller shaft (ISO 3046-1)* : 98.9 kW (134,4 hp)
 Maximum rpm : 2500
 Torque at maximum rpm : 394 Nm
 Fuel consumption : 202 g/kW.h(146g/hp.h)
 Gearbox, standard : ZF45
 Ratio : 2.2/2.5/3:1
 Optional : ZF45A
 1,51/2,03/2,44:1
 Newage PRM 500
 1,46/1,94/2,57/2,9:1
 Dry weight (incl. standard gearbox) : 532 kg / 1170 lbs
 Max. installation angle (backwards) : 15°
 Max. lateral inclination angle (continuously) : 30°
 Calorifier connection : standard
 Cooling system, standard : heat exchanger cooling (dual circuit)
 Optional : keel-cooling



This waterproof VETUS instrument panel, provided with 6 control-lights, a combined tach/ hourmeter, temperature gauge, oil pressure gauge, a buzzer and the starter switch, is standard supply. Instead of the engine panel shown, one of the other VETUS engine panels may be supplied. An engine panel for a second steering position may be supplied as well.

4 VETUS flexible engine mountings, type LMX140 (standard supply)



All VETUS DEUTZ engines above 74 kW have a PTO connection for a hydraulic pump as standard. If other engine makes do not provide such a device, please consult VETUS.

* In accordance with ISO 8665